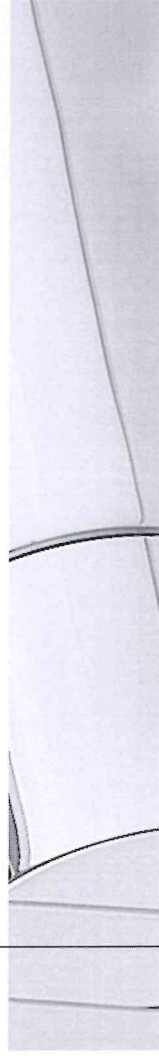
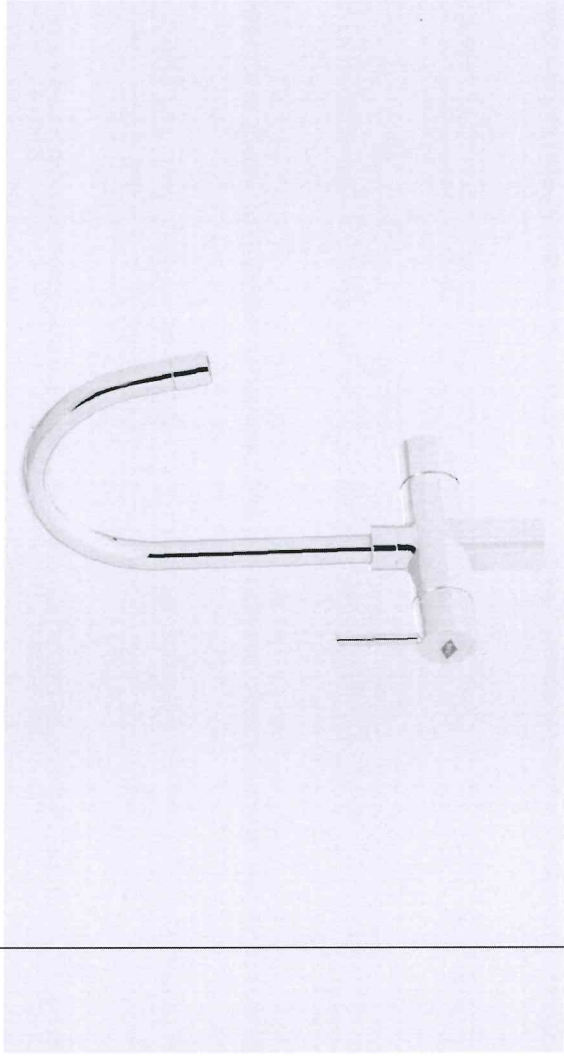


Itho 3-in-1 tap

Assembly and Instructions



Climate for life.

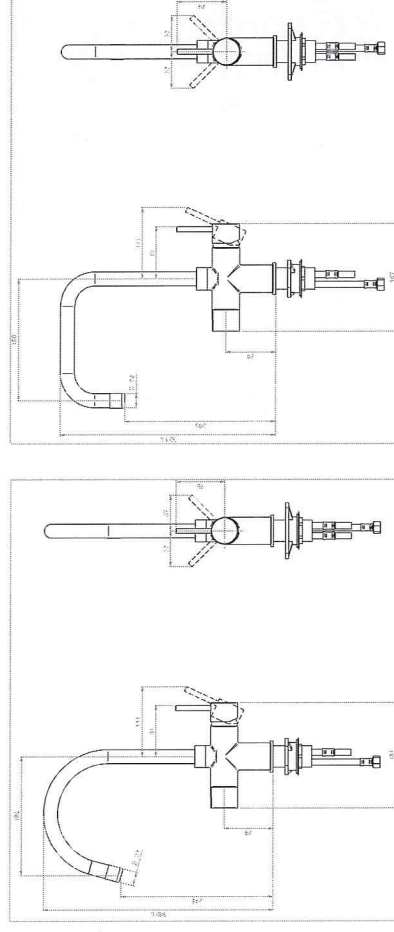
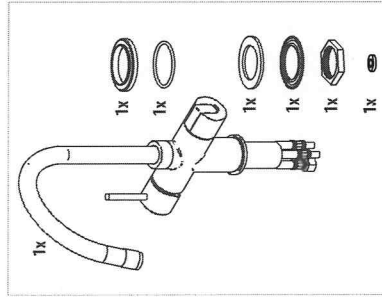
Introduction

The 3-in-1 tap Modern is suitable for dispensing of boiling water (100°C) and dispensing hot and cold water. The connections of the mixer section can be connected with filter valves directly to the hot and cold water mains. The boiling water part of the 3-in-1 tap can directly be connected to the vessel.

This installation manual presents the instructions for the installation and safe use of the 3-in-1 tap. If the 3-in-1 tap isn't installed according to these instructions. The warranty is invalid. The manufacturer is not liable for damages resulting from the incorrect compliance with the installation or user instructions.

Package contents

I. Check the contents of the box



Mounting the 3-in-1 tap

CAUTION! The boiling water tap can only be connected to the boiling water vessel!

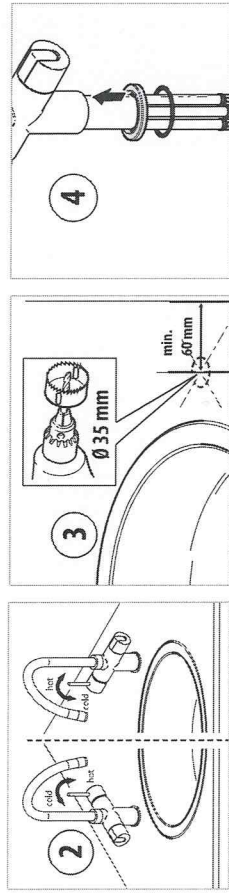
Installation

Preparation

1. Mount the boiling water vessel (see Installation manual boiling water vessel).
2. Locate the 3-in-1 valve at the sink.

TIP! Choose left- or right-handed use!

3. When a tap hole is present this can be used for the mounting.
When a tap hole is absent, drill a hole \varnothing 35 mm at least 60 mm from the back (wall).
4. Slide the rosette and the O-ring over the foot.



Mounting

1. Slide the 3-in-1 tap with the flexible hoses through the drilled hole.
2. Slide the rubber gasket and retaining plate on to the threaded tube.
3. Tighten the lock nut firmly.
4. Connect the flexible hoses to the hose of the boiling water vessel. Make sure to use the gasket between both boiling water hoses. Connect the hot and cold mains pipes.

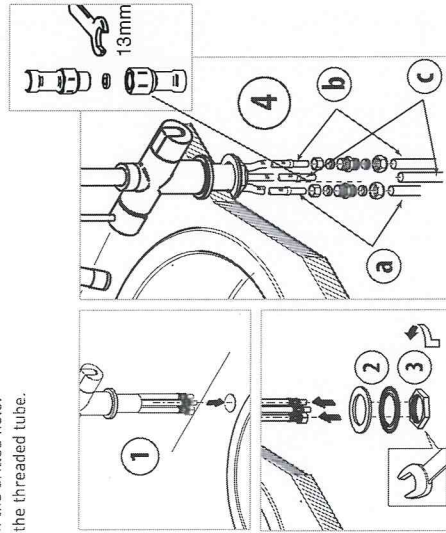
TIP! With a left-handed connection you can reverse the hot and cold operation by reversing the tap lever.

CAUTION! Place a new gasket between the tap and the boiling water vessel. A reserve gasket is supplied with the boiling water vessel.

TIP! Install a filter valve on either side of the water filter for easy access and maintenance.

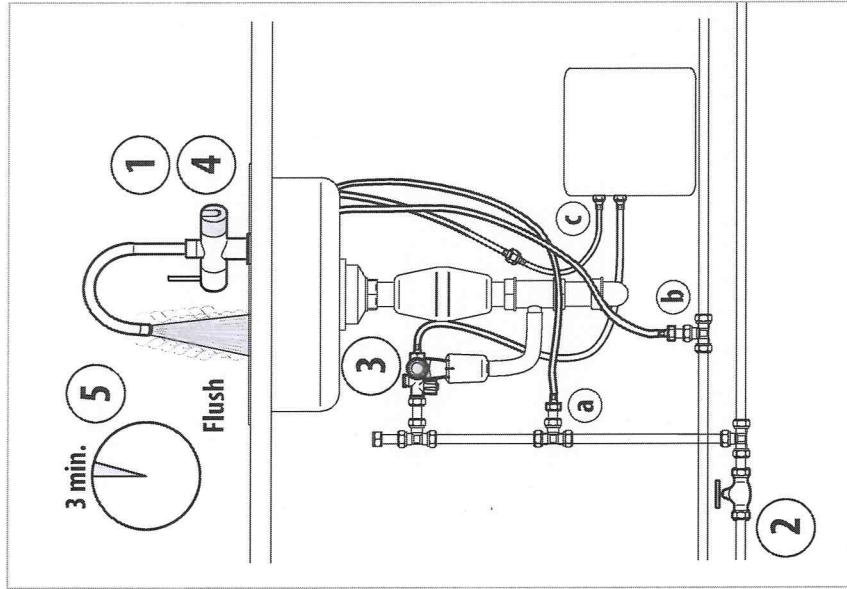
Connections

- a. Cold water, (10mm compression fitting)
- b. Hot water, (10mm compression fitting)
- c. Boiling water, (connection M10 x 1.25)



Filling and venting the boiling water vessel

1. Close the boiling water tap.
2. Open the mains valve.
3. Open the inlet valve of the connection kit.
4. Open the boiling water tap.
5. Wait until water flows from the tap.
6. Let the water flow for 3 minutes until clear water flows from the tap.
7. Check for leaks, rectify as necessary.

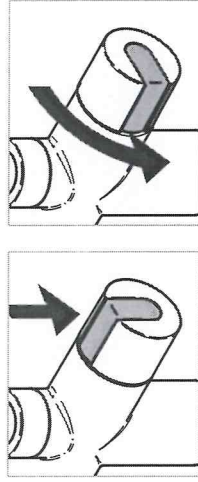


Usage

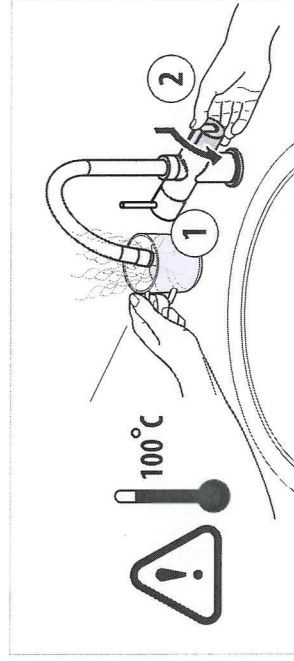
When you start using the tap, always flush the 'leading' flow of approximately one cup of water away before using the water for making tea or coffee. This will eliminate the air bubbles from the water and prevent foam from forming on your tea. You need to be aware that the tap delivers boiling water (at 100°C) at all times. Take particular care in this regard and watch out for scalding. This appliance is not intended for use by children, users with a physical or mental disability or users with insufficient knowledge, unless they have received adequate instruction on the operation of the appliance by a person who is responsible for their safety. Children must not play with the appliance under any circumstances whatsoever.

Child safety

1. The tap is fitted with a childproof control knob which requires a push and turn action to operate it.
2. Although boiling water flows from the Tap, the outer wall is not directly hot!
3. By releasing the button the boiling water knob jumps back and locks automatically!



CAUTION! The 3-in-1 Tap is not a toy! The temperature of the water coming out of the tap is 100°C and will cause scalding!



Usage of boiling water tap.

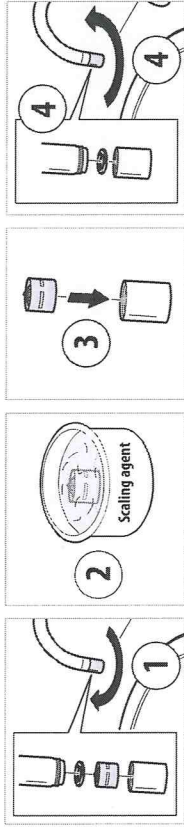
1. It is advisable to hold your cup, tea or coffee pot or saucepan close to the outlet of the tap spout. This will prevent the water from splashing and enable you to operate safely.
2. Press the release button and turn the knob.

Maintenance

The tap and sieve (aerator) will eventually calcify.

WARNING! Only use cleaners containing citric acid, other resources affect the material!

Tap sieve (aerator) decalcification



1. Unscrew the sieve valve collet.
2. Clean the sieve with tap scaling agent.
3. Place the tap in the sieve tube.
4. Place the gasket on the faucet strainer and tighten down the tube

Troubleshooting Guide

Complaint	Cause	Solution
Water Leak.	Connection leak.	Tighten connection or replace it.
Tap does not supply boiling water.		Check the boiling water vessel installation instructions.
Mixer does not supply water.		Check whether the main water valve is open. If this is not the case, please contact your retailer.
Mixer tap only supplies cold water.		See manual boiler.
Reduced water or splashing water.	Calcium deposits on tap sieve.	Descalcify the lime deposits on the tap sieve.

Take the following steps if you cannot correct the fault.

1. Turn the appliance off (see instruction boiling water vessel).
2. Contact the retailer. The retailer will take care of the follow-up on the guarantee.

Warranty statement

This appliance is warranted by Itho UK to be free from material and/or manufacturing defects. This warranty is valid for the period and subject to the terms and conditions stated below.

Warranty claims handling

The responsibility for implementing warranty lies with the accredited installer or kitchen specialist business from whom the appliance was acquired. Warranty will be valid as from the date of purchase shown on the invoice.

Warranty Period: 2 years warranty

Warranty terms and conditions

1. Proof of purchase, showing date of purchase is to be submitted with the warranty claim.
2. Warranty covers material and manufacturing defects only and which are judged to be by Itho UK.
3. The appliance requires to be installed, used and maintained exclusively in accordance with the installation and user manuals.
4. The appliance may only be employed under the circumstances and conditions of use set out in the installation and user manuals.
5. The appliance must not have undergone any modifications in its make-up.
6. Defects resulting from the following are not covered by warranty:
 - Effect of pitting caused by not sufficient earthing to sink and tap are not covered under the warranty
 - Effects of corrosive liquids, vapours or gases
 - Effects of chemical additives in the drinking water supply
 - Lightning strikes, fire or natural disasters
 - Negligence, improper use or vandalism applied externally
 - Normal wear and tear
7. Warranty will be honoured if and only if the quality of the mains water meets the following requirements:
 - pH 7 < pH < 9.5
 - Fe < 0.2 mg/l
 - Cl < 150 mg/l
 - conductivity < 125 mS/m
 - water hardness < 12 °dH*

*] Above 12 °dH and 15 °dH warranty will only be valid if a water decalcifying and softening filter is fitted. Proof of purchase of such filters is to be submitted with a warranty claim.
8. Itho UK will not accept any claims for consequential losses such as loss of profit, or losses due to water and/or fire damage.
9. Repairs, reinstatement or replacement of parts under warranty will not give rise to any extension of the warranty period of the appliance itself.

Characteristic	Boiling water part	Mixer part
Outflow height tap	241 mm	
Recommended operating pressure	1-3 bar	1-5 bar
Test pressure	10 bar	10 bar
Max. temperature	120°C	80°C
Max. clamping length	50 mm	50 mm
Diameter drilling hole	35 mm	35 mm
Max. water flow	3.5 l/min. without water-filter at 3 bar pressure	10 l/min. without water-filter at 3 bar pressure

Climate for life

Itho strives at all times to offer people an enjoyable living and working environment with its innovative solutions in climate systems. These are solutions for temperature, clean air and hot water in the domestic environment in which people and environment go harmoniously together. We want a more comfortable and healthier living environment but at the same time, we aim for lower energy consumption.

With sustainable technologies and innovations, Itho proves that opposite objectives can be combined with little effort. You can recognise these solutions by the Itho Living Blue label. Our aim is to develop climate systems that respect the world. Your wishes become our inspiration and Itho works constantly to achieve this: 'Climate for life'.

Itho UK Ltd.

10 Faraday Court
First Avenue, Centrum 100
Burton on Trent, Staffordshire
DE14 2WX
United Kingdom
www.itho.co.uk



Climate for life.