

Mounting instruction

Instructions:

Replacement of a 3-in-1 tap plastic boiling water knob into a metal model

Step by step guide

1

Required tools:

- o Flathead 3 mm screwdriver
- o Crosshead screwdriver type PH3
- o Drilling machine + 3,5 mm drill
- o 2 wood (or Parker- type) screws type $\varnothing 4 \times 20 / 30$ mm

Required spare-part:

- o Article number **07.95.75.054** (chrome)
- o Article number **07.95.75.053** (stainless steel look)



This job can be done under full water pressure, but if the system is active and hot we **strongly recommend** to disconnect the electric power supply and to flush boiling water till it is cold.

After this step done, shut off the water supply to avoid water splashing if the valve has been opened unexpectedly

If you shut off the main water supply to the dwelling, handle as follows:

1. Disconnect the Boily or Boily⁺ electric power cord
2. Open the tap and flush boiling water till the water from the tap is cold
3. Close the valve on the Boily or Boily⁺ safety group
4. After those three steps done, you are allowed to shut off the mains water supply to the dwelling

2

Dismantle the plastic push button as follows:

- a. Lift off the knob blocking mechanism with a flat head 3 mm screwdriver

- b. Till it breaks and looses

Note:

After this action the plastic push button will be damaged and not to be used again!



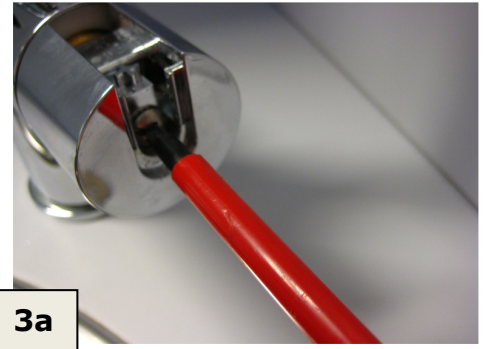
Mounting instruction

3

Dismantle the plastic push button:

- a. Remove the crosshead screw, turn anti-clockwise

- b. Slide the knob from the axis.
The result is as shown in picture 3b



4

Dismantle the spring construction as follows:

- a. Pull the spring including the upper and lower spring cups backwards from the axis



Warning!

The spring is under tension, mind your fingers

Tip

For safety, you could use a rag around the spring to avoid a jump of the spring after you pulled it from the axis.

- b. The result is as shown in picture 4b

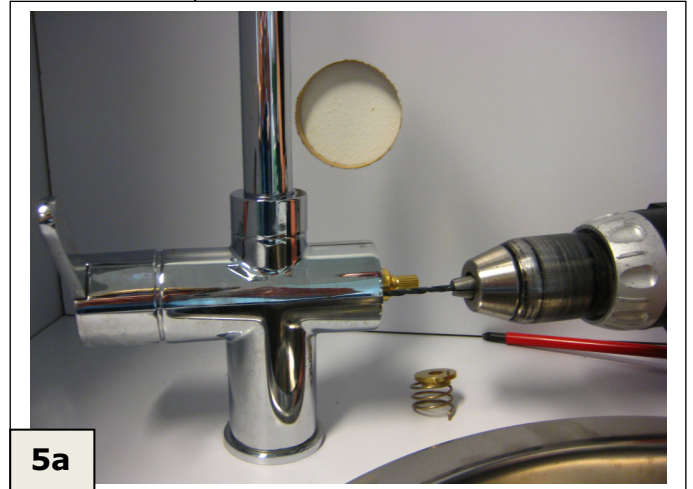
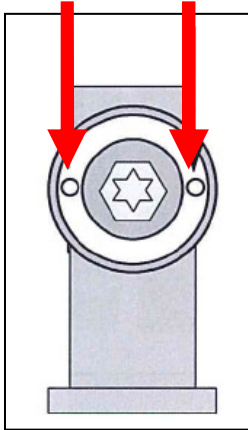


Mounting instruction

5

Dismantle the plastic insert from the tap body

- a. Drill two $\varnothing 3,5$ mm holes in the plastic insert as shown below



5a

6

Dismantle the plastic insert from the tap body

- a. Fasten 2 screws into the drilled holes



6a

- b. Pull out the plastic insert



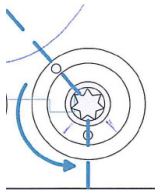
6b

Mounting instruction

7

Fit replacement part spring with cups on the axis

- a. Unpack the replacement set, ring + spring + cup
Check that the long pin of the spring is fitted in the upper cup (see picture 7a)
- b. Slide the spring set on the axis. Start with the long pin of the spring in 0°- position
- c. Before the upper cup fits on the axis, turn the cup 90° anti-clockwise for the necessary spring tension



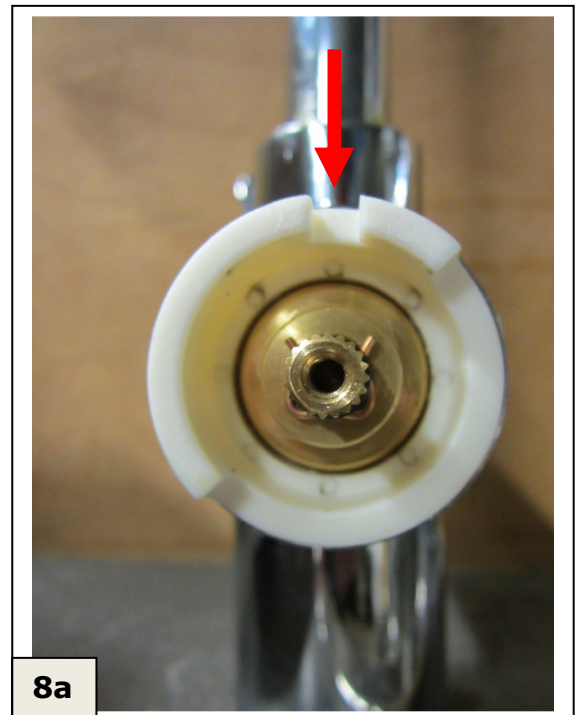
- d. Push the complete spring set on the axis
- e. Check that the boiling water valve is still in the "off"- position



8

Fit replacement part plastic insert

- a. Place the plastic insert into the tap body
Be sure that the mark is exactly on top

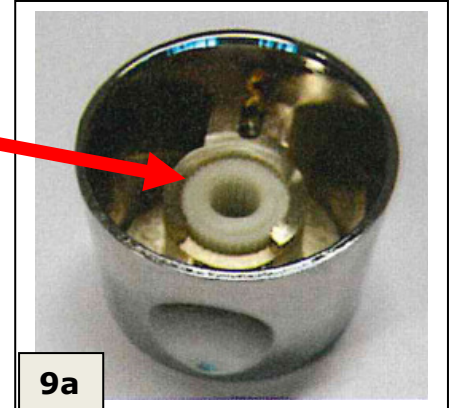
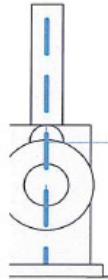


Mounting instruction

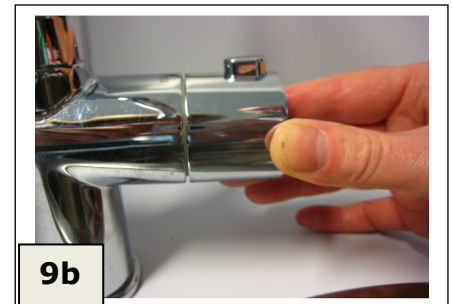
9

Fit metal knob to the tap body

- a. Place the plastic insert into the knob
Be sure that the facet ring is shown
- b. Slide the knob on the axis
Be sure that the "stop"- button is fully in the 0°- position as shown below



9a



9b

10

Finish the job

- a. Fasten the knob with the crosshead screw including retainer washer.



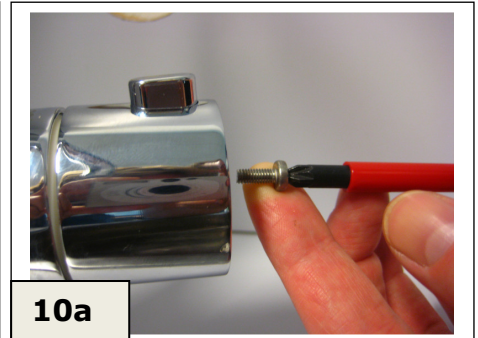
Turn clockwise

- b. Place the cover on the screw

Note:

After you finished the job, open the water supply mains if it was closed and fill and bleed the whole system for at least one minute by opening the boiling water tap.

Release the knob in open position and check the automatic return to off position for optimal child safety!



10a



10b



Ithodaalderop BV

Adm. de Ruyterstraat 2
3115 HB Schiedam
Postbus 21
3100 AA Schiedam
T (010) 427 85 00
F (010) 427 88 88
E info@ithodaalderop.nl
H www.ithodaalderop.nl

document version: 20120308.2